

Leadership

[Home](#) » [About AISI](#) » Leadership



John Brett

Chairman, AISI
President and CEO,
ArcelorMittal USA

[Biography](#)





Kevin Dempsey

Interim President and CEO

[Biography](#)

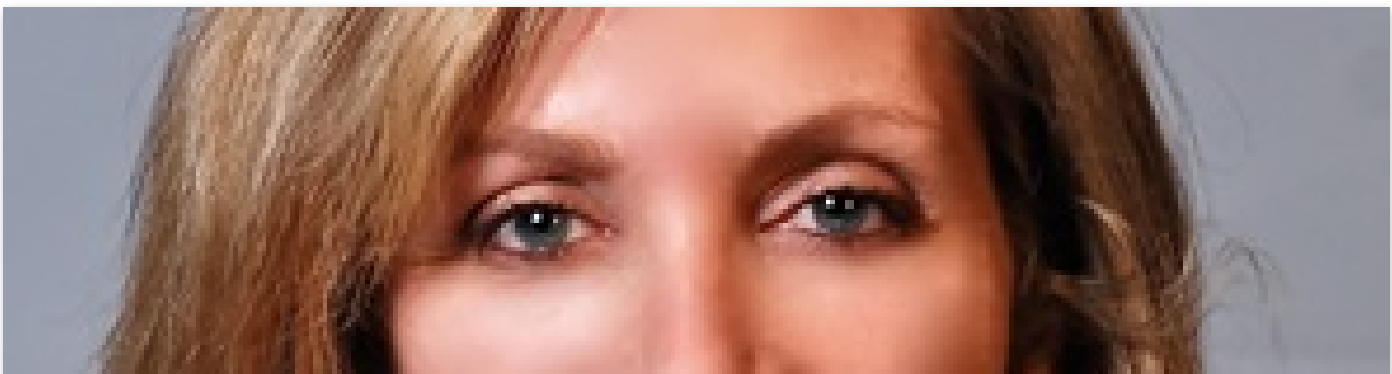


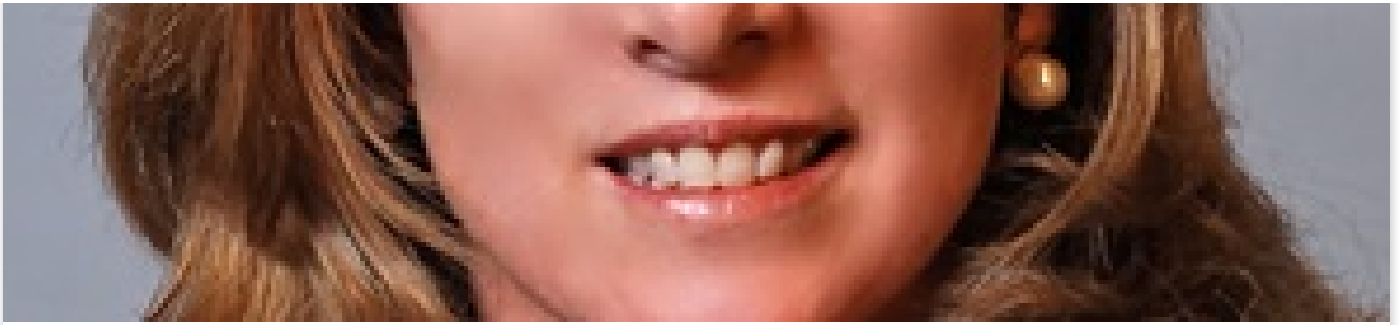
Charles Schmitt

Vice Chairman, AISI
President,
SSAB Americas

[Biography](#)

Senior Management





Lisa Harrison

Senior Vice President, Communications

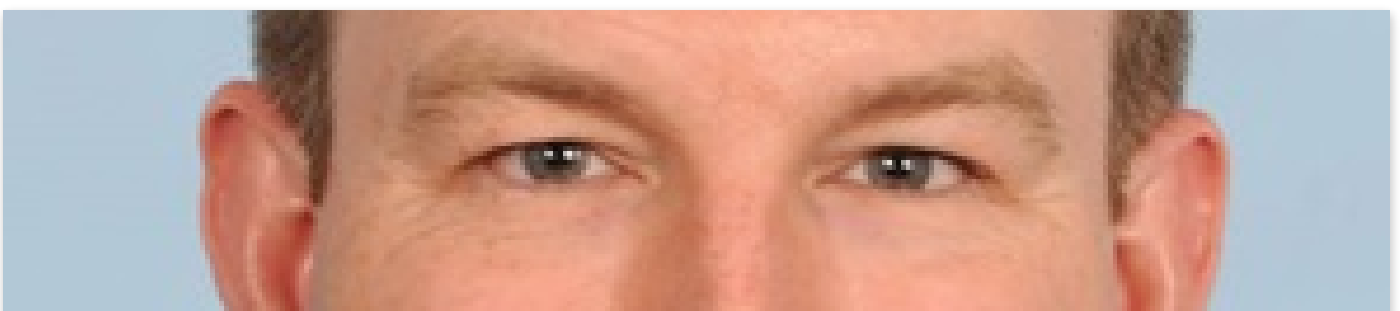
[Biography](#)



Paul Balserek

Vice President, Environment

[Biography](#)





Timothy Gill

Chief Economist, AISI Treasurer

[Biography](#)

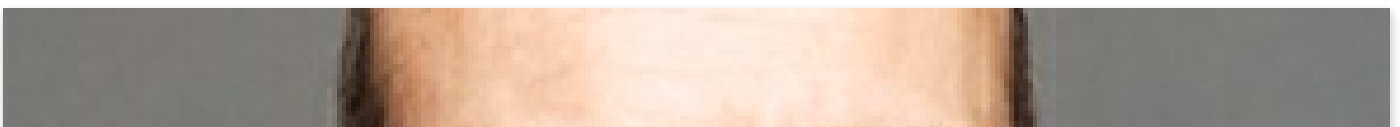


Mark Thimons, P.E.

Vice President, Sustainability

[Biography](#)

AISI Staff Leadership





John Catterall

Vice President, Automotive Program

[Biography](#)



Robert J. Wills, P.E.

Vice President, Construction Program

[Biography](#)



ECONOMIC IMPACT STUDY



Subscribe To Our E-Newsletter
NEW STEEL UPDATE

Email Address

Go

Steel Industry News

[Automotive Steel Industry Experts Honored by Auto/Steel Partnership](#)

[Steel Imports Down 21.9% Year-to-Date Through September](#)

[POLITICO: Steel, aluminum producers decry metal glut](#)

[Global Steel Groups Urge the Global Forum on Steel Excess Capacity to Expand Efforts to Address Growing Steel Crisis](#)

[CFSEI Publishes Series of Beginner Technical Notes](#)

[SSSBA to Host Session on Press Brake Steel Tub Girder System at International Bridge Conference](#)

[August Steel Shipments Down 22.9% from August 2019](#)

[CFSEI to Host Webinar on "Demystifying Cold-Formed Steel Torsion Analysis for Design" on October 29, 2020](#)

[AISI Releases September SIMA Imports Data](#)

[AISI Publishes Two New Cold-Formed Steel Research Reports](#)



25 Massachusetts Avenue, NW Suite 800
Washington, DC 20001
202.452.7100

2000 Town Center Suite 320
Southfield, MI 48075
248.945.4777



[About AISI](#)
[Institute Awards](#)

[Mission](#)
[Leadership](#)
[Members](#)
[Partners](#)
[Join](#)
[History](#)
[Links](#)

Public Policy

[Pro-Manufacturing](#)
[Trade](#)
[Transportation and Infrastructure](#)
[Energy and Climate Change](#)
[Environment](#)
[Workforce Policy](#)
[Letters and Testimony](#)
[Public Hearings](#)
[Make Your Voice Heard](#)
[SteelPAC](#)
[Internships](#)

Industry Data

[Economic Impact](#)
[Reports](#)

Markets

[Appliances](#)
[Automotive](#)
[Bridges](#)
[Construction](#)
[Energy](#)
[Highways](#)
[National Defense](#)
[Packaging](#)
[Utility Poles](#)

Technology

[Steel Production](#)
[Collaborative Research and Development](#)
[COMT](#)

Sustainability

[Industry Commitment](#)
[Corporate Social Responsibility](#)
[Recycling](#)
[Life Cycle](#)

News

Contact

[Email Preference Center](#)

Members Only Login

[Shop](#)